



Issued: 9/05/19



IN BRIEF

- **Crop growth has been slow in the cold, dry conditions with many crops just sitting at the 2-4 leaf stage and some looking a bit pale and stressed. The recent rain and some forecasted warmer temperatures are just what the crop requires to grow away from any issues.**
- **Bird damage is also evident in crops so make full use of bird scarers at this early stage of growth where there is risk.**
- **Ensure all your nitrogen has been applied to emerged crops to drive rapid canopy growth and look to apply manganese as soon as the crop gets into a period of rapid leaf growth.**
- **Be careful not to check growth with any remaining herbicide applications.**
- **For an overview of winged aphid numbers in your area, check the new aphid mapping tool available on BBRO website for the latest information from our network of aphid traps. <https://bbro.co.uk/on-farm/aphid-survey-map/>**
- **Aphid numbers have increased in some areas and whilst there are a few reports of the threshold being exceeded; numbers have generally remained below threshold for spraying. A change to warmer conditions is likely to encourage numbers so it is imperative crops are checked very closely from now onwards.**



ADVISORY

Aphid watch

By the end of week two (up until 5th May) there was a marked increase in aphid numbers as 1,186 winged *M. persicae* and 4 *M. euphorbiae* were caught in the yellow water pan network, with clear aphid hotspots developing especially in the Bury St Edmunds factory area. The good news is that none of the aphids tested were found to be carrying virus. For all the latest information please refer to the maps of winged *M. persicae* activity accessible on the BBRO website.

Click a marker for a summary of aphid activity this week. Grey markers indicate that no sample data is available, green markers indicate that no aphids were detected. Orange markers indicate that aphids were found, red markers show that aphids were detected and at least one was carrying virus. Click the button below for further information.

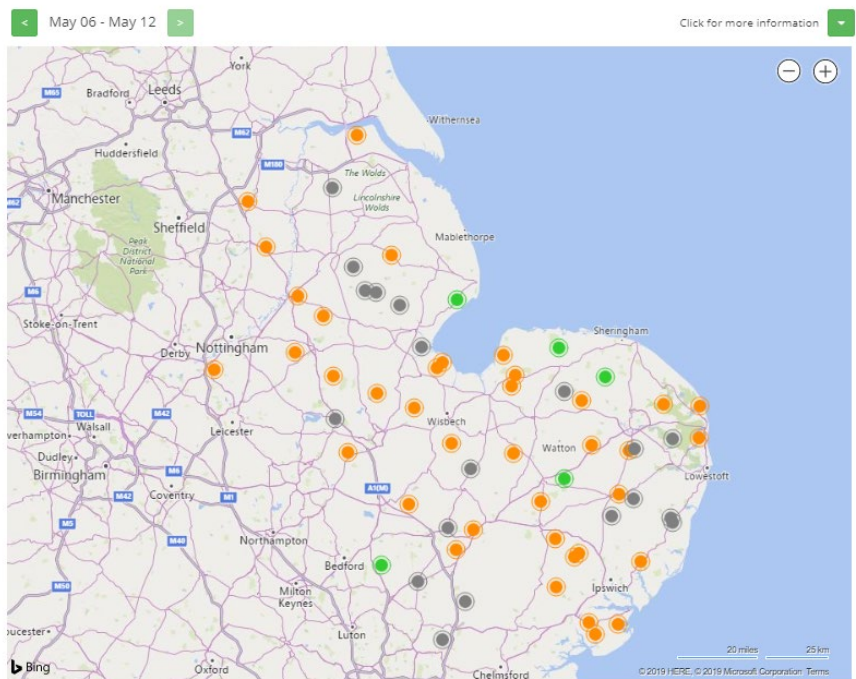


Image 1: <https://bbro.co.uk/on-farm/aphid-survey-map/>

Some crops have now been treated for green wingless aphids when at threshold, although the cooler, windy and showery conditions over the previous weekend followed by 'wet Wednesday' will have helped to suppress aphid flight and build-up.

The yellow water traps are beginning to highlight some large variation in aphid numbers within relatively small geographical areas and can only be used as an early warning or guide to the numbers. Don't rely on spray recommendations based on other beet crops in other areas. It is **IMPERATIVE** that all crops are assessed before the application of insecticides.

With the slow start to the growing season and a potentially longer period to when mature plant resistance develops, it is essential you only spray when necessary to conserve options for later.

Please continue to monitor your crops for wingless aphids and only spray once this threshold has been breached. Black aphids should not be included in this threshold. Usually aphids can be found on the heart leaves, within folds at leaf margins and on the underside of leaves.

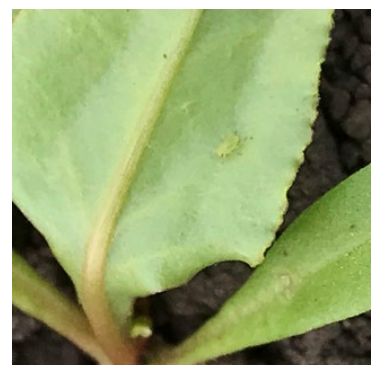


Photo 1: *Myzus persicae* (green wingless) on underside

Tank mixing insecticides with other products (such as herbicides) may not be suitable as the timing and water volumes may not be the same and it is important not to compromise the efficacy of the insecticide.

Other pest issues

Damage by flea beetles, thrips, birds and soil pests are all evident again over the last seven days and the BBRO has received further comments about orange pests that 'must be aphids'. These are actually globular springtails and should not cause any damage to the crop.



Photo 2: Globular springtails

Further eggs of beet leaf miner have been observed but, as yet, no reported mining activity.

If you are concerned about plant loss and are unsure of the cause, place several pieces of anchored black plastic onto the soil surface of affected areas, and then inspect under the plastic over subsequent days for any signs of pests. If you are unsure of the identity of pests found, please send photographs or samples to the BBRO Plant Clinic for further analysis.

Recent rain will see an increase in **slug activity**, so check crops now whilst soils are wet (use baiting points if necessary) and remember timing is key if slug pellets are required. Options for slug control in sugar beet and advice on use of pellets and stewardship guidelines can be found in the BBRO Reference book on line.



Photo 3: Check crops for slugs

Rapid canopy development

With some long-overdue rain and warmth, canopies will grow rapidly. Make sure that all the nitrogen has now been applied to emerged crops. A return to warmer temperatures and wetter soils will allow crops to pick up nitrogen rapidly from the soil which will drive new leaf development. Also, ensure you apply manganese to rapidly growing crops.

Avoiding herbicide damage

There are some signs of herbicide damage in crops so be careful with any remaining applications, especially if the crop is stressed. Remember that during periods of rapid growth leaves will be relatively 'soft' with low wax levels. Be wary of using a high rate of adjuvant oils on rapidly growing and backward crops, especially as temperatures increase. As weeds begin to grow, choose your actives carefully. Check minimum beet growth stages, especially the size of the 1st true leaves in relation to the choice of active and the rate.



Photo 4: Herbicide damaged plant

Check minimum growth stage for herbicides, especially where there are different varieties.
The photographs below highlight the difference between two varieties within the same field



EVENTS

1. **BBRO and AHDB event** 14th May – sorry fully booked

GREATSOILS SUGAR BEET SPECIAL

2. BBRO will be joining NIAB for their **STAR Open Day** on the 22nd May Stanaway Farm, Otley, IP6 9NA 10:00 – 13:00. Further details: <https://bbro.co.uk/events/>
3. **Morley Innovation Event** – 20th June. Morley Farms. Join BBRO and many others at this event, which will be crammed to the hilt with agricultural innovation and know-how. Further details: <https://tmaf.co.uk/morley-innovation-day/>
4. **BeetField19 - Summer Open Days**
Tuesday 2nd July Fotheringhay, Peterborough. PE8 5HZ
Thursday 4th July Thelveton Estate, Diss. IP21 4HP
Book now: <https://bbro.co.uk/events/>



CONTACTS

British Beet Research Organisation, Innovation Centre, Norwich Research Park, Colney Lane, Norwich, NR4 7GJ

Dr Mark Stevens mark.stevens@bbro.co.uk 07712 822194

Dr Simon Bowen simon.bowen@bbro.co.uk 07718 422717

General Enquiries info@bbro.co.uk



BASIS POINTS

Two BASIS points in total (not per bulletin) have been allocated for the period between 01/06/18 and 31/05/19 reference CP/67099/1819/g. To claim these points please email michele@basis-reg.co.uk

Two NRoSO points in total (not per bulletin) have been allocated between 01/06/2018 and 31/05/2019 reference NO465447f. To claim these points please email NRoSOCPSD@cityandguilds.com