



Issued: 10th June 2021



IN BRIEF

- Crops have made great progress over the last week, with many now at the 10-12 leaf stage and some close to meeting across rows. Most plants have got their roots down into moisture and are picking up nutrients and will continue to develop rapidly (although a bit of rain would help). There are a range of growth stages within some crops, especially where emergence was staggered in the earlier dry conditions so make sure you check all areas of field before spray applications.



Fig 1 & 2: BBRO Demonstration field on at Bracebridge Heath, drilled 25th March.

- Aphid numbers continue to increase, particularly in the south of the Bury area and are increasingly being reported and recorded across the BBRO yellow water pan (YWP) network. The wingless aphid threshold of 1 green wingless aphid per 4 plants has now been exceeded in some crops and the first foliar insecticides (Teppeki) have or are being applied; generally these have been in the south of the beet growing area (Suffolk & Norfolk). The situation is changing daily so make sure you check the very latest update on the [BBROplus website](#).
- We are now in a critical phase for aphid monitoring. It is vital to inspect crops regularly and closely for aphids. Check the younger heart leaves as well as more developed older leaves. Roll-back some newly formed leaves to check for any aphids underneath. Remember, aphid distribution can be very variable both within fields, between adjacent fields and certainly in fields in different localities on the

farm. Make sure you check open and more exposed areas of fields as well as near field margins and on headlands. There are also increasingly numbers of black bean aphids too.

- Do not go too early. Remember that we currently only have a two-spray programme (Teppeki followed by InSyst) so we need to use sprays effectively. Do **not** use sprays unnecessarily.
- Large number of ladybirds, lacewings and soldier beetles are actively foraging in crops and will be playing their part in helping to keep aphid numbers in check.
- The first symptoms of downy mildew have now been recorded in Suffolk, again check your crop.



Fig 3: Ladybirds very active (no aphids found!) at the BBRO demo site at Downham Market.

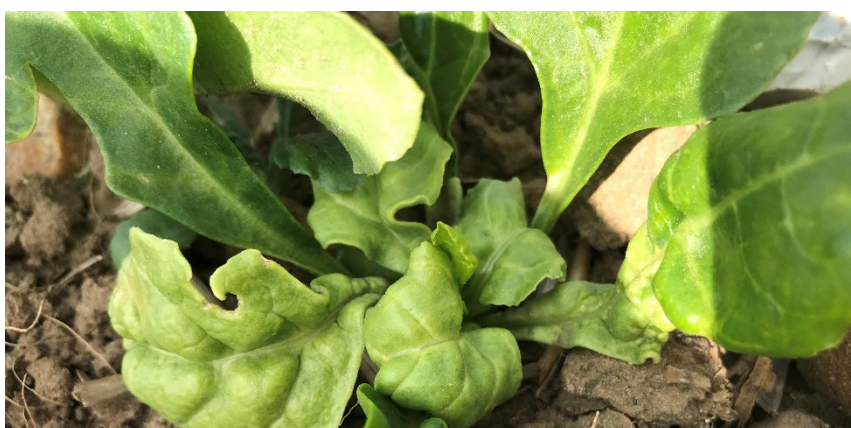


Fig 4: Downy mildew found in Suffolk



ADVISORY

Myzus persicae (peach-potato aphid) are now being confirmed in samples submitted to the BBRO lab from the YWP sites, particularly those sites in Essex and Suffolk. However, to put these numbers in context, currently on average more *M. persicae* were collected on just one sampling date in May last year than have been found in total this season (so far).



Fig 5: Wingless and winged peach potato aphids Myzus

Wingless juveniles vary in size according to their age and can reach a similar size to adults. They may range in colour from pale pink to green and become quite dark as they and the crop age.

We have received some photographs querying aphid identification. The small orange bugs in the photo below are globular springtails.



Fig 6: Globular springtails which are harmless to sugar beet.

Nutrition

Symptoms of manganese deficiency continue to increase especially in rapidly growing crops. Crops on organic and light sandy soils will be the most susceptible to manganese deficiency. Make sure foliar nutrition is applied sufficiently early enough to minimise effect on canopy growth. Keep a close eye for other nutritional deficiencies as crops grow rapidly.



Fig 7: Plant expressing manganese deficiency. Don't let symptoms reach this stage before treatment.



EVENTS

[Book now to secure your place at one of the BBRO summer events.](#)

24th June – Diss, event full.

BeetField21 Self-guided Demo Farm Tours



- Compare early performance of 2022 RL
- Virus incidence and project updates
- Drought resistance and impact of irrigation
- Future proofing sugar beet crop
- Mobile plant clinic
- Spotlight on cercospora



Also visit the support and advice hub to discuss current issues with the BBRO team

15th June: Thorney | 17th June: Bracebridge | 22nd June: Bexwell | 24th June: Diss

Limited spaces - 90 minutes per visit
Booking essential: www.bbro.co.uk/events
NRoSO and BASIS points available



CONTACTS

British Beet Research Organisation, Innovation Centre, Norwich Research Park, Colney Lane, Norwich, NR4 7GJ

Prof Mark Stevens mark.stevens@bbro.co.uk 07712 822194

Dr Simon Bowen simon.bowen@bbro.co.uk 07718 422717

Stephen Aldis stephen.aldis@bbro.co.uk 07867 141705

General Enquiries info@bbro.co.uk



BASIS POINTS

Two BASIS points in total (not per bulletin) have been allocated for the period between 01/06/21 and 31/05/22 reference **CP/111958/2122/g**. To claim these points please email michele@basis-reg.co.uk

Two NRoSO points in total (not per bulletin) have been allocated between 01/06/2021 and 31/05/2022 reference **NO469403f**. To claim these points please email NRoSOC PD@cityandguilds.com